

# ABRANTES AGILITY CAPITAL JULY 2025



10 -13 July  
ABRANTES PORTUGAL



17 - 20 July  
ABRANTES PORTUGAL



# ABRANTES AGILITY CAPITAL JULY 2025

## ORGANIZATION



protocol with the Portuguese Kennel Club



Partnership with the Abrantes City Hall



## Sponsors



# APPROACH TO ABRANTES



500 km from Madrid

1095 Km from Barcelona

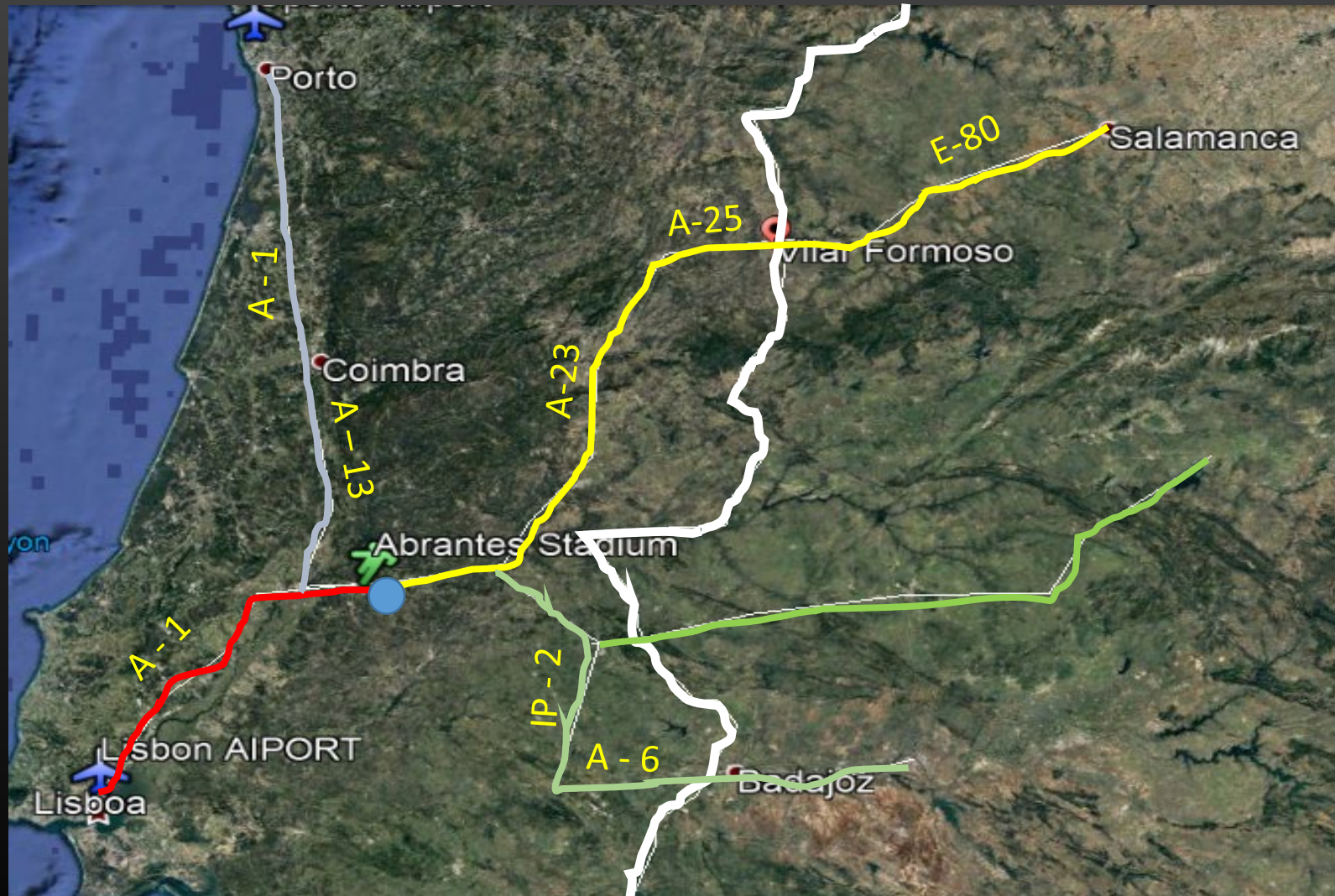
1600 Km from Paris

150 Km from Lisbon

200 Km from Oporto



# APPROACH TO ABRANTES

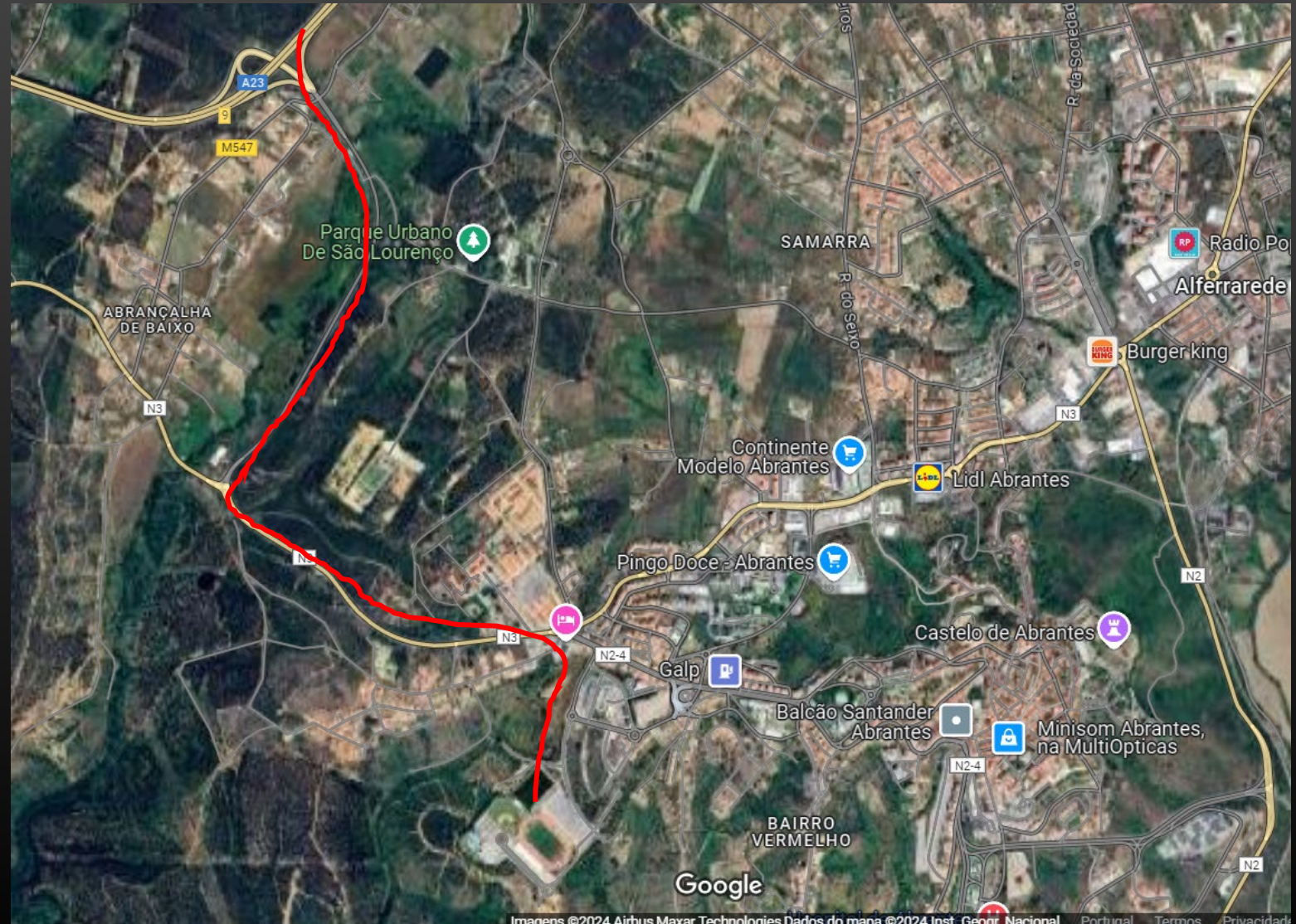


- Portuguese Border
- From Central Europe
- From South Spain
- From East Spain
- From Lisbon
- From Oporto



# APPROACH TO ABRANTES

From A 23 Exit # 9  
"Rio de Moinhos"

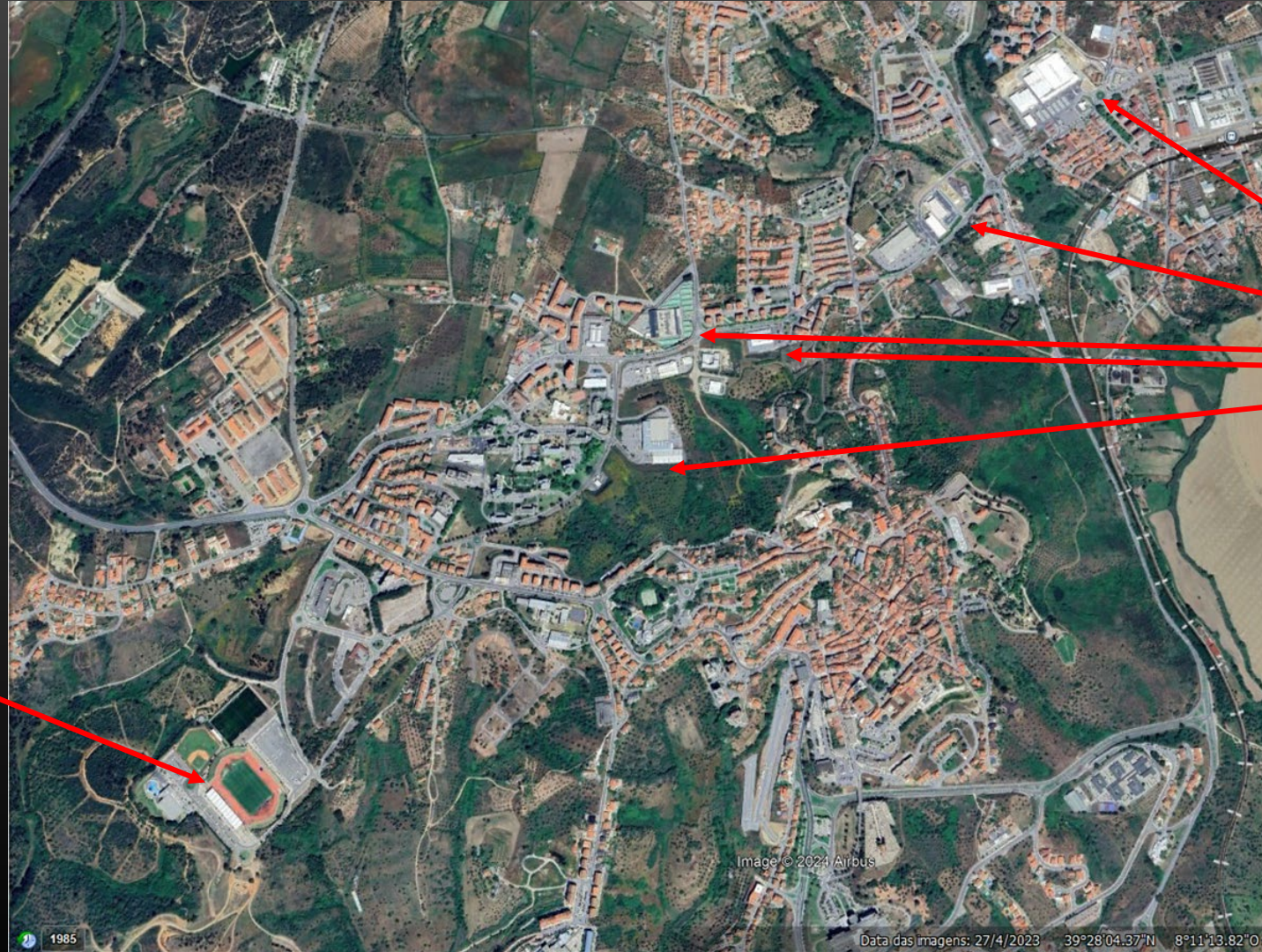


Imagens ©2024 Airbus Maxar Technologies. Dados do mapa ©2024 Inst. Geogr. Nacional Portugal Termos Privacidade



# SHOPPING

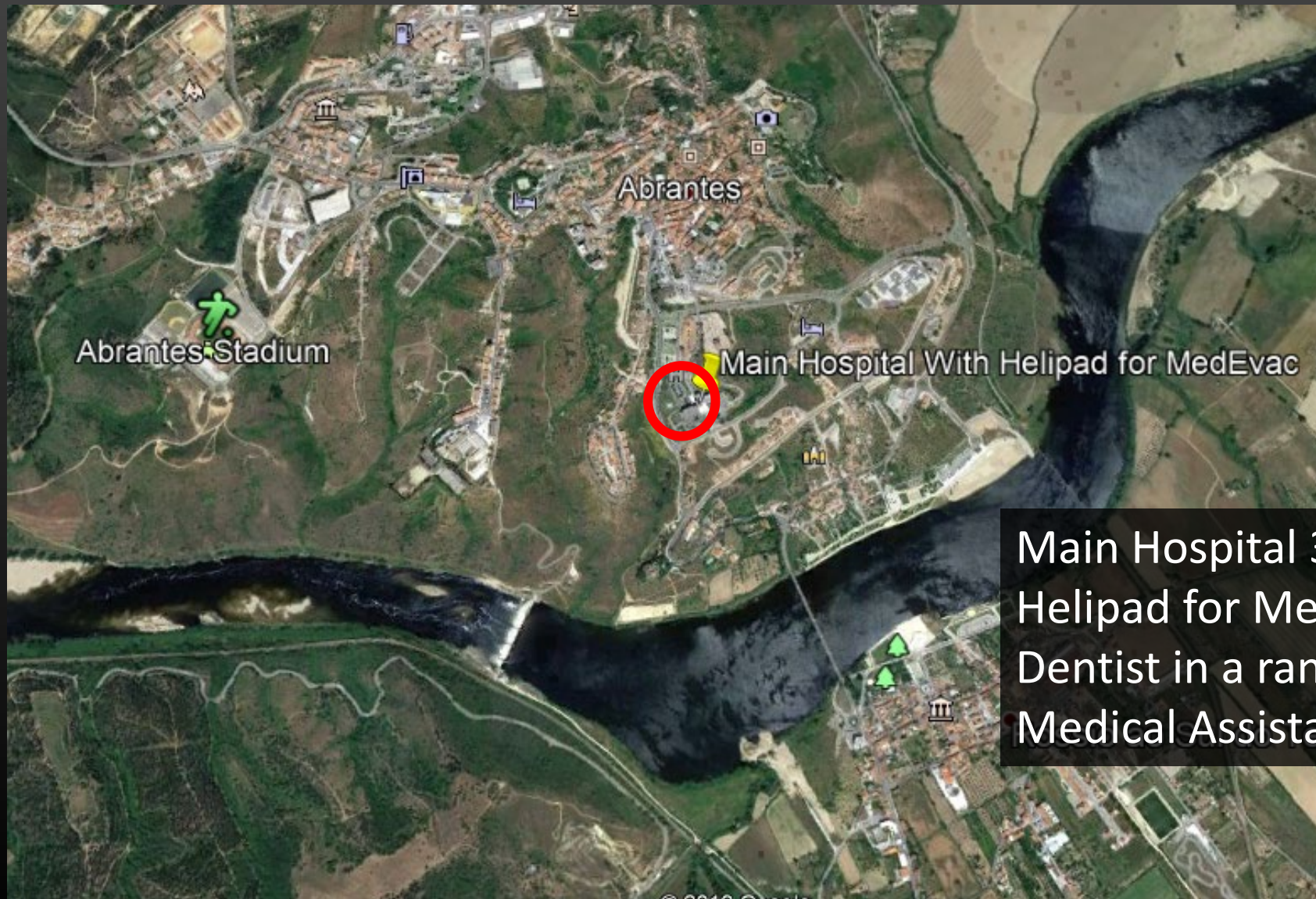
EO 2025  
JOAWC 2025



Supermarkets



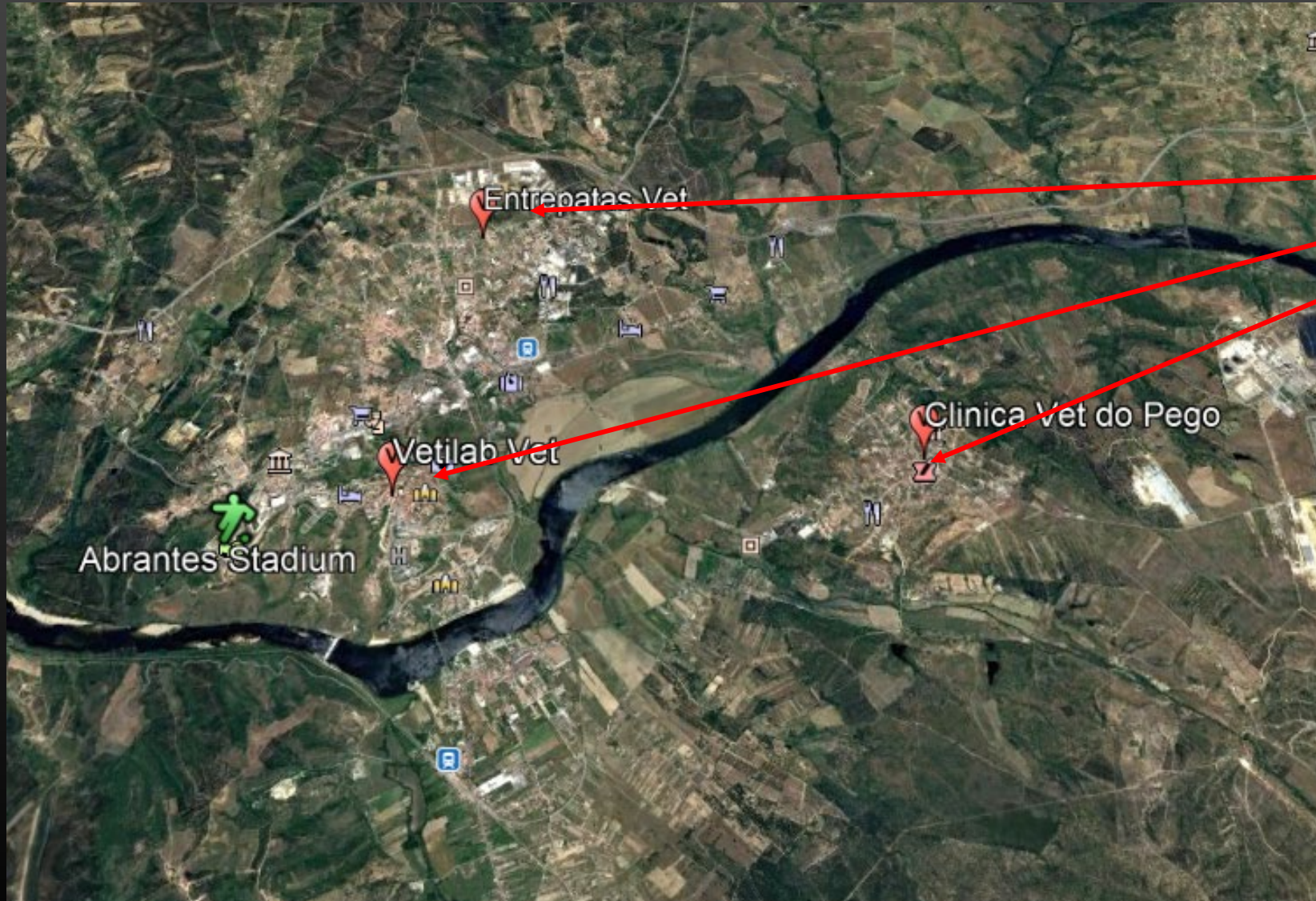
# MEDICAL ASSISTANCE



Main Hospital 3 Km away  
Helipad for Medevac  
Dentist in a range of 4 km  
Medical Assistance in place



# VETERINAIRY ASSISTENCE



## CLINICS

### Vet Clinics capabilities:

- X-Ray
- Ultrasound
- Electrocardiogram
- Surgery



# VENUE OVERVIEW





# VENUE OVERVIEW





# MEASURES TO MINIMIZE THE EFFECTS OF EVENTUAL HIGH TEMPERATURES

- 20X60mts or more if needed – Acclimatized tent – Brumazation System
- Approach to the rings (3 net dogs) under Shade with Brumization System
- Net Shade on the runaway
- Swimming Pools for dogs in the end of the courses
- Microchip reading under shade
- Swimming Pools and showers for dogs – several in the stadium
- Divided schedule
  - ✓ Morning Period – 7 am to 1 pm
  - ✓ Big Break during hottest hours
  - ✓ Evening Period – 6 pm to 9 pm
- Planning to have 5 or 6 competition rings
- No dogs will be allowed in the cars
- Schedule JOAWC
  - ✓ Morning Period – 7 am to 1 pm
  - ✓ Junior only run in the morning period



# RINGS AND FACILITIES



- 1600 Seats
- 4 Storage rooms
- VIP Room
- Press Room
- Results Room
- Judges Room
- Help Desck
- Restourant/Snack Bar
- First Aid
- Internet
- Electricity
- WC's
- Lavatories



# RINGS



- Shaded Approach to the rings with Water Sprays
- Rings layout can vary
- Shade in the side on the runway
- Little swimming pool in the end of each course.



# RINGS AND FACILITIES



Toilets and  
lavatories



# CAMPING



**Camping Area A**  
**Potable Water Points,**  
**Up To 10 Power Boxes**  
**41 KVA Trifasic**  
**Bins as needed**  
**Tents Caravans and Motor Homes**  
**Insurance Cover**



# CAMPING



**Camping Area B**  
**Potable Water Points,**  
**Up To 10 Power Boxes**  
**41 KVA Trifasic**  
**Bins as needed**  
**Caravans and**  
**Motor Homes**  
**Insurance Cover**



# PARKING AND SHUTTLE



Shuttle to serve the competitors from the parking area to the Competition Area (400m)

- Shuttle Path
- ▭ Parking Area
- ▭ Alternative Parking Areas



# SAFETY and SECURITY

## SECURITY

- Stadium facilities security provided by a private security enterprise permanent
- Parking security provided by a private security enterprise (permanent during competition hours)
- Policy officers in random patrols
- Security plan will be provided by the City Hall

## SAFETY

- A fireman team in permanence
- First aid team with evacuation capability in permanence
- Traffic control team
- Volunteers Permanente presence in the kenneling Tent
- Safety plan will be provided
- Insurance event coverage

# EO JUDGES

Event	Judge Name	Country
EO 17 - 20	Zsuzsa Veres	Portugal
	Domingos Carneiro	Portugal
	Belmiro Sousa	Portugal
	Roman Lukac	Slovakia
	Ana Beltran	Spain
	Jan Sprij	Netherlands



# JOAWC JUDGES

Event	Judge Name	Country
<b>JOAWC 10 - 13</b>	Hugo Santos	Portugal
	Sérgio Sousa	Portugal
	Juraj Ruza	Slovakia
	Zsófi Bíró	Hungary

# OTHER INFORMATION

**Hotels** - soon we will release in the web site under construction now

**Cropped Dogs – Yes if:**

- Vet Reasons (1)
- Admitted by breed Standards in home country (2)
- Legally competing in home country (2)

**But need paper proof:**

- From the Vet (1)
- From the Kennel Club (2)

**Entries —** 01May to 31 May

**Payments —** 01May to 07 June

**Camping —** Entry Format available In the end of November Up to 300 Places 9,5 X 5 m

**Program —** Flowagility - need Individual competitors registration in  
<https://flowagility.com/>



# Questions to

E-mail:

JOAWC – [joawc2025@gmail.com](mailto:joawc2025@gmail.com)

EO – [europeanopen2025@gmail.com](mailto:europeanopen2025@gmail.com)

WhatsApp: [+351924389451](https://wa.me/351924389451)